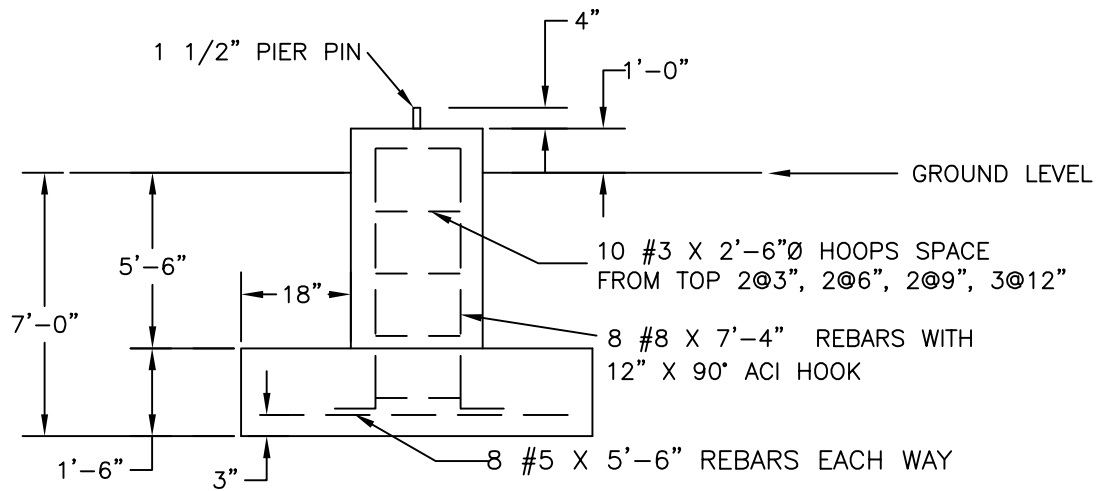


PLAN VIEW



CROSS SECTION

GENERAL NOTES

1. CONCRETE TO HAVE 3000 PSI MIN. COMPRESSIVE STRENGTH AFTER 28 DAYS.
2. ALL REINFORCEMENT STEEL IS DEFORMED AND MEETS THE STRENGTH REQUIREMENTS OF ASTM A615 GRADE 60.
3. EMBEDDED STEEL TO HAVE 3" MIN. CONCRETE COVER.
4. WORLD TOWER COMPANY WAS NOT PROVIDED WITH A SITE SPECIFIC SOILS REPORT FOUNDATIONS DESIGNED FOR NORMAL DRY SOILS CONDITIONS IN ACCORDANCE WITH EIA-F FOR A MINIMUM ALLOWABLE SOIL BEARING PRESSURE OF 2000 PSF. NO ALLOWANCE WAS MADE FOR SOFT SOILS, PEATS, ORGANICS, WATER, OR ROCK IN THE EXCAVATION(S).

REACTIONS	
SHEAR	1.0 MAX.KIPS
DOWNLOAD	46.0 KIPS

TITLE:

TOWER FOUNDATION

GREEN MOUNTAIN POWER

SCALE	NONE	DWN.	LKB	CKD.	DATE	5-21-08
FILE				DWG. NO.		